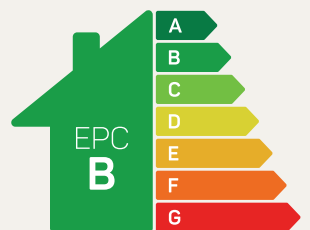




# The Disley

## 1 bed apartment

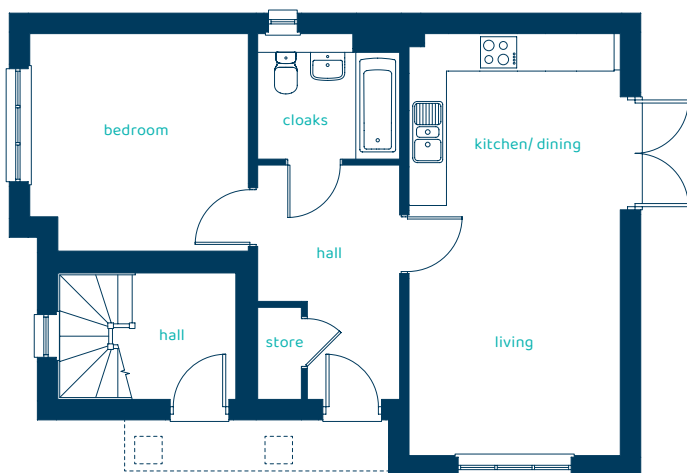
A modern 1-bedroom apartment. Key features include open-plan living space, large bedroom and bathroom.



Predicted EPC rating

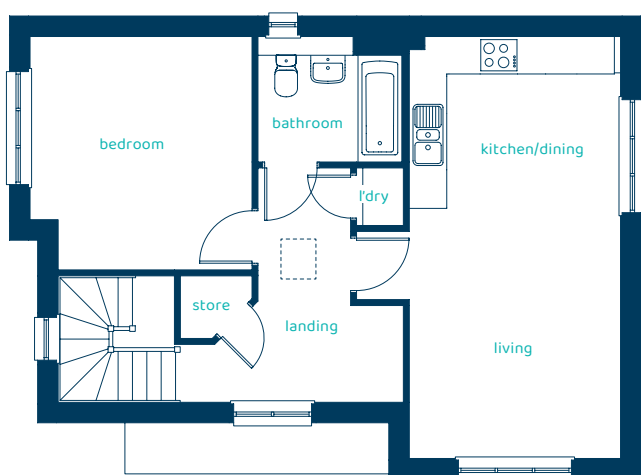


[anwylhomes.co.uk](http://anwylhomes.co.uk)



## Ground Floor Plan

Room	Imperial	Metric
Kitchen/Dining/Living	22'2" x 11'1"	6.76m x 3.38m
Bedroom	11'6" x 11'5"	3.50m x 3.48m
Cloaks	7'6" x 6'5"	2.27m x 1.96m



## First Floor Plan

Room	Imperial	Metric
Kitchen/Dining/Living	22'2" x 11'1"	6.76m x 3.38m
Bedroom	12'4" x 11'8"	3.75m x 3.56m
Bathroom	7'7" x 6'5"	2.31m x 1.96m

# The Disley

## 1 bed apartment

Anwyl Homes is a registered developer with the NHQB. The images on this literature are computer-generated. Specific plots may be 'handed' (mirrored), detached/semi-detached, elevation treatment/roof materials may vary, and any garages may be single or double. Room sizes are approximate, dimensions are taken from the longest room point and are for guidance only. Kitchen and bathroom layouts are indicative. These plans are correct at the time of creation but may be subject to change during construction. Please speak to your Homes Adviser for more details. The Disley 17/01/24.

