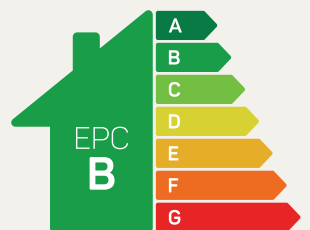




# The Carmarthen

2 bed semi-detached / mid terrace

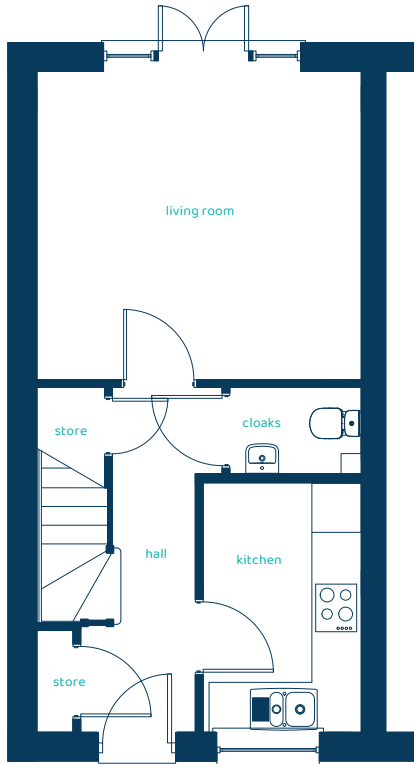


Predicted EPC rating

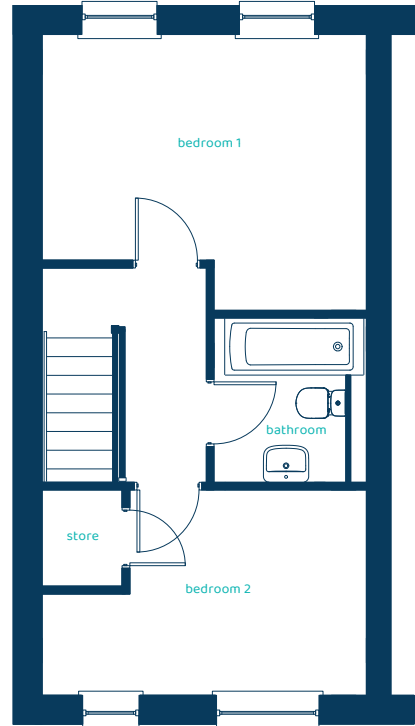
**ANWYL**

[anwylhomes.co.uk](http://anwylhomes.co.uk)

## Ground Floor Plan



## First Floor Plan



Room	Imperial	Metric
Kitchen	9'11" x 6'3"	3.03m x 1.9m
Living / Dining	12'10" x 12'3"	3.9m x 3.73m
Cloaks	5'2" x 3'6"	1.68m x 1.06m

Room	Imperial	Metric
Bedroom 1	12'10" x 10'11"	3.9m x 3.34m
Bedroom 2	12'10" x 8'x1"	3.9m x 2.48m
Bathroom	6'7" x 5'7"	2m x 1.71m

# The Carmarthen

## 2 bed semi-detached / mid terrace

Anwyl Homes is a registered developer with the NHQB. The images on this literature are computer-generated. Specific plots may be 'handed' (mirrored), detached/semi-detached, elevation treatment/roof materials may vary, and any garages may be single or double. Room sizes are approximate, dimensions are taken from the longest room point and are for guidance only. Kitchen and bathroom layouts are indicative. These plans are correct at the time of creation but may be subject to change during construction. Please speak to your Homes Adviser for more details. The Carmarthen 17/01/25.

