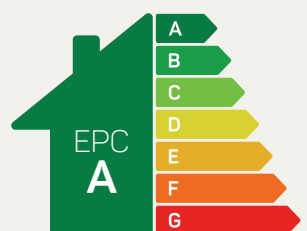




The Oakmere

4 bed detached

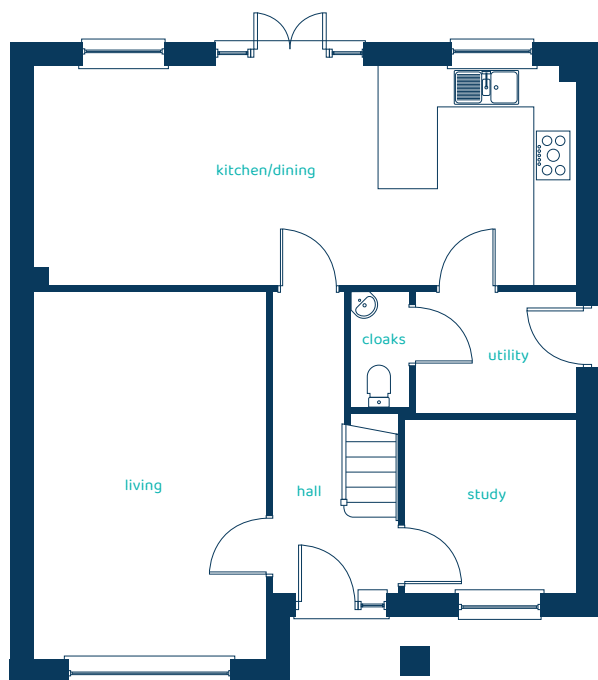
Generous proportions and high ceilings make the Oakmere perfect for families. Its expansive kitchen/dining area welcomes everyone with room to spare, and the separate living room and study provide even more space. Upstairs, there are four bedrooms, including a master with an en-suite and fitted wardrobes, plus a luxurious family bathroom with quality fixtures.



Predicted EPC rating

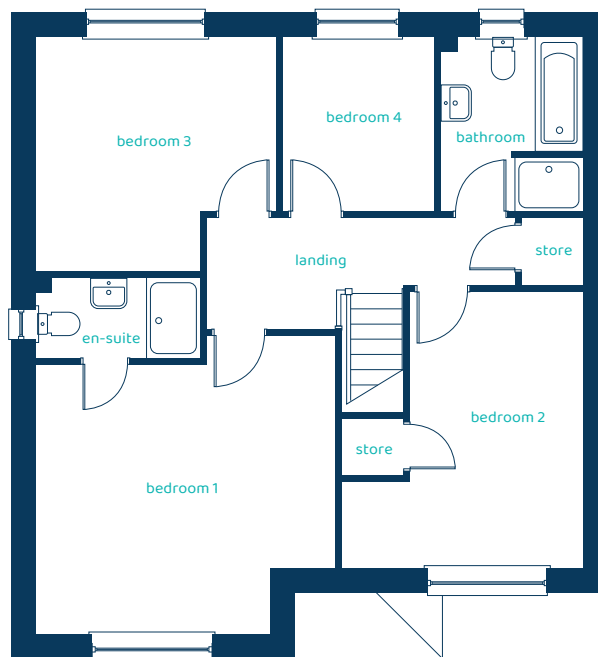
anwylhomes.co.uk

Ground Floor Plan



Room	Imperial	Metric
Kitchen/Dining	27' x 10'10"	8.24m x 3.31m
Living Room	18'3" x 11'6"	5.56m x 3.51m
Study	8'7" x 8'6"	2.62m x 2.59m
Utility	7'11" x 6'	2.42m x 1.83m
Cloaks	5'8" x 2'11"	1.72m x 0.9m

First Floor Plan



Room	Imperial	Metric
Bedroom 1	14'10" x 14'10"	4.52m x 4.51m
En-suite	8'1" x 3'11"	2.47m x 1.2m
Bedroom 2	13'8" x 11'10"	4.16m x 3.62m
Bedroom 3	11'11" x 11'7"	3.62m x 3.54m
Bedroom 4	8'8" x 7'7"	2.63m x 2.31m
Bathroom	8'8" x 6'11"	2.63m x 2.11m

The Oakmere

4 bed detached

Anwyl Homes is a registered developer with the NHQB. The images on this literature are computer-generated. Specific plots may be 'handed' (mirrored), detached/semi-detached, elevation treatment/roof materials may vary, and any garages may be single or double. Room sizes are approximate, dimensions are taken from the longest room point and are for guidance only. Kitchen and bathroom layouts are indicative. These plans are correct at the time of creation but may be subject to change during construction. Please speak to your Homes Adviser for more details. HS_A_OAKM_G-2_04/09/24.

