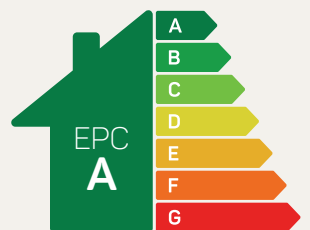




# The Bunbury

3 bed detached

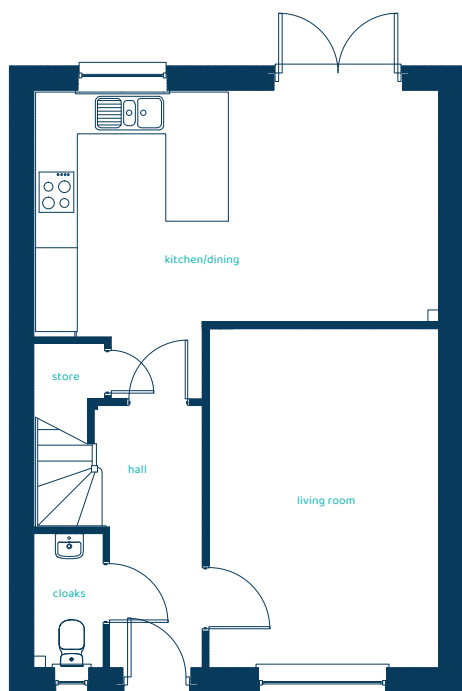
3 double bedrooms make this a perfect family starter home or for first time buyers. The downstairs comprises of a modern open plan kitchen/diner, with French doors leading out to the garden. Upstairs the main bedroom boasts an en-suite. Plus, there's a family bathroom for those busy mornings.



Predicted EPC rating

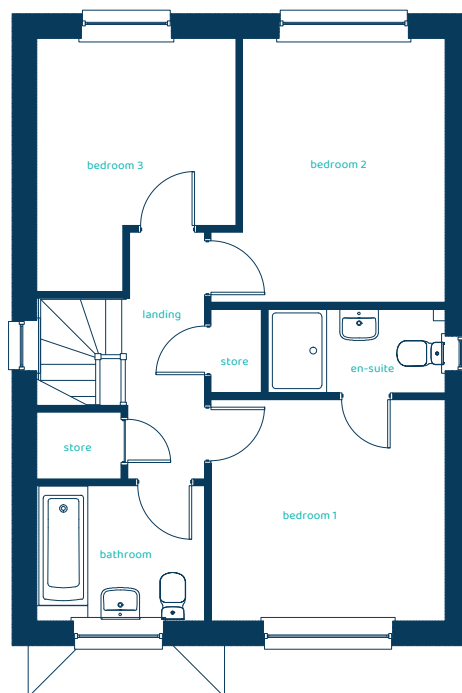
[anwylhomes.co.uk](http://anwylhomes.co.uk)

## Ground Floor Plan



Room	Imperial	Metric
Kitchen/Dining	18'11" x 10'9"	5.76m x 3.27m
Living Room	15'10" x 10'8"	4.82m x 3.25m
Cloaks	6'3" x 3'2"	1.9m x 0.97m

## First Floor Plan



Room	Imperial	Metric
Bedroom 1	10'10" x 10'3"	3.31m x 3.12m
En-suite	8'2" x 3'11"	2.5m x 1.2m
Bedroom 2	12'3" x 9'5"	3.73m x 2.86m
Bedroom 3	11'9" x 9'3"	3.57m x 2.81m
Bathroom	7'9" x 6'3"	2.36m x 1.9m

# The Bunbury

## 3 bed detached

Anwyl Homes is a registered developer with the NHQB. The images on this literature are computer-generated. Specific plots may be 'handed' (mirrored), detached/semi-detached, elevation treatment/roof materials may vary, and any garages may be single or double. Room sizes are approximate, dimensions are taken from the longest room point and are for guidance only. Kitchen and bathroom layouts are indicative. These plans are correct at the time of creation but may be subject to change during construction. Please speak to your Homes Adviser for more details. HS\_A\_BUNB\_G-2\_04/09/24.

