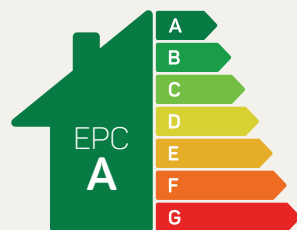




The Bretton

3 bed semi-detached

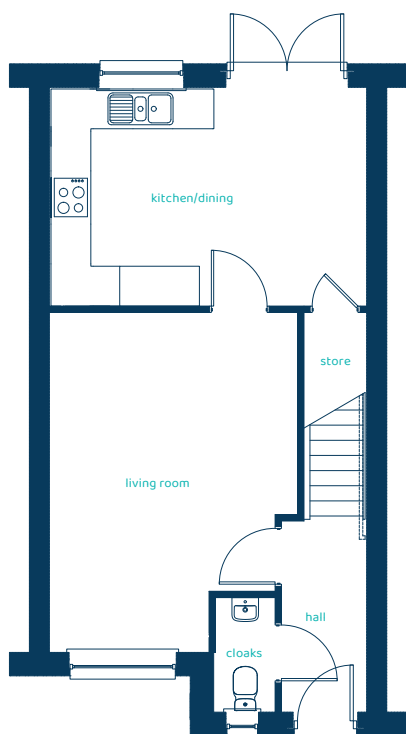
Perfect for families and first-time buyers, this three-bedroom semi-detached home has plenty of space. The heart of the home is the modern open-plan kitchen/diner, with French doors leading to the garden. Upstairs, you'll find two double bedrooms and a single, with the master boasting an en-suite. Plus, there's a family bathroom to make busy mornings easier.



Predicted EPC rating

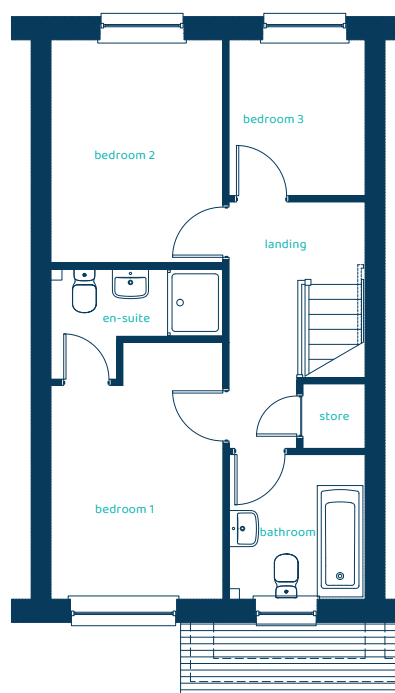
anwylhomes.co.uk

Ground Floor Plan



Room	Imperial	Metric
Kitchen/Dining	15'6" x 10'9"	4.73m x 3.27m
Living Room	16'9" x 12'2"	5.1m x 3.71m
Cloaks	5'7" x 2'11"	1.7m x 0.9m

First Floor Plan



Room	Imperial	Metric
Bedroom 1	12'9" x 8'6"	3.88m x 2.59m
En-suite	8'6" x 5'6"	2.59m x 1.67m
Bedroom 2	11'1" x 8'6"	3.37m x 2.59m
Bedroom 3	7'8" x 6'9"	2.35m x 2.05m
Bathroom	7'2" x 6'9"	2.18m x 2.05m

The Bretton

3 bed semi-detached

Anwyl Homes is a registered developer with the NHQB. The images on this literature are computer-generated. Specific plots may be 'handed' (mirrored), detached/semi-detached, elevation treatment/roof materials may vary, and any garages may be single or double. Room sizes are approximate, dimensions are taken from the longest room point and are for guidance only. Kitchen and bathroom layouts are indicative. These plans are correct at the time of creation but may be subject to change during construction. Please speak to your Homes Adviser for more details. HS_A_BRET_G-2_04/09/24.

