

ANWYL
thoughtful homes

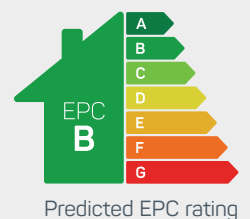


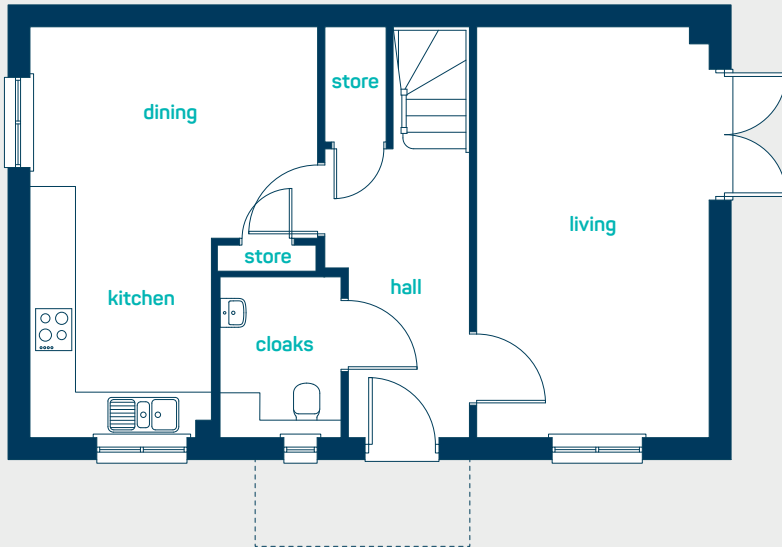
the longford

3 bed detached home

The longford is a stunning three bedroom home with an *extensive* downstairs space, perfect for entertaining. The upstairs boast two double bedrooms with en-suite to the master bedroom.

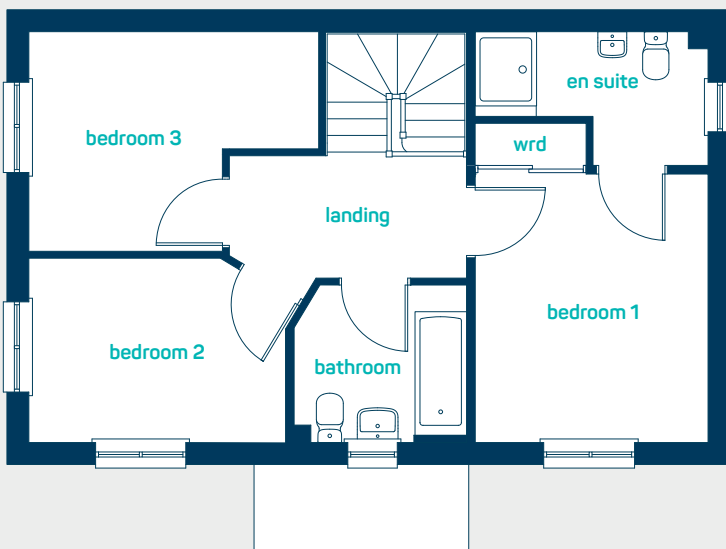
www.anwylhomes.co.uk





ground floor

kitchen/ dining	18'6" x 12'11"
living room	18'6" x 10'5"
cloak room	5'5" x 7'3"
kitchen/ dining	8.45m x 3.73m
living room	5.63m x 3.17m
cloak room	2.2m x 1.65m



first floor

bedroom 1	12'1" x 10'6"
en-suite	10'6" x 6'0"
bedroom 2	11'7" x 8'4"
bedroom 3	13'1" x 9'11"
bathroom	7'10" x 7'1"
bedroom 1	3.69m x 3.20m
en-suite	3.20m x 1.83m
bedroom 2	3.53m x 2.53m
bedroom 3	3.98m x 3.01m
bathroom	2.38m x 2.15m

the longford
3 bed detached home

ANWYL
thoughtful homes

**NEW
HOMES
QUALITY
CODE**

**NEW HOMES
OMBUDSMAN
SERVICE**

www.anwylhomes.co.uk

Anwyl Homes is a Registered Developer with the NHQB. This is a computer-generated image of the longford, elevation treatment may vary. Room sizes are approximate, dimensions are taken from the longest room point (please consult homes advisor for measurement points). Plots may be handed and any garages may be single or double. Kitchen and bathroom layouts are indicative. These plans are correct at the time of going to press, but may be subject to change during construction. Please ensure that you check for specific plot details. 01/11/22.

everything considered.