

ANWYL
thoughtful homes

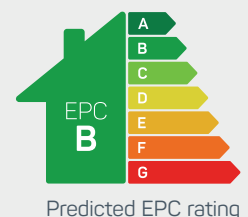


the lancaster

4 bed detached with double garage

An *impressive* 4 bedroom detached luxury home with 2 en-suite bedrooms and a separate bathroom, ideal for families. Combining traditional exteriors and high ceilings with modern living features including a large open plan kitchen, dining and family room. The Lancaster has been built for today's family.

www.anwylhomes.co.uk

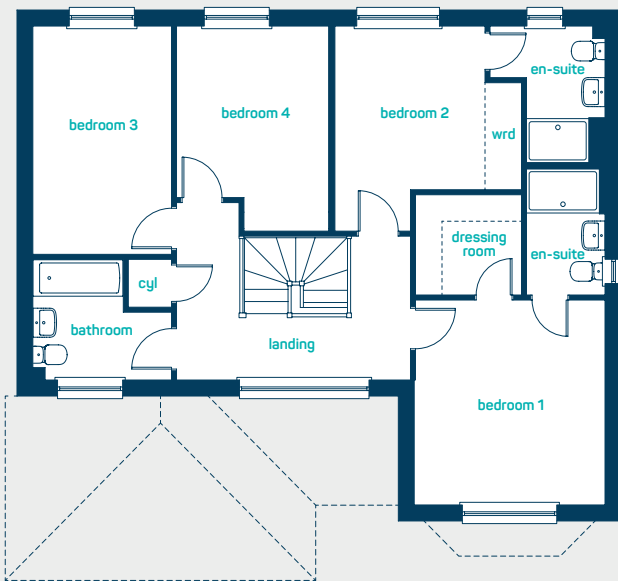




ground floor

kitchen/dining /family	29'0" x 12'6"
utility	8'8" x 6'6"
living room	18'6" x 11'10"
cloaks	6'6" x 3'3"

kitchen/dining /family	8.83m x 3.80m
utility	2.63m x 1.97m
living room	5.63m x 3.61m
cloaks	1.97m x 1.00m



first floor

bedroom 1	12'8" x 11'10"
en-suite 1	7'10" x 4'10"
dressing room	6'8" x 6'3"
bedroom 2	12'8" x 11'9"
en-suite 2	8'5" x 7'2"
bedroom 3	14'1" x 8'8"
bedroom 4	12'8" x 9'7"
bathroom	8'8" x 7'5"

bedroom 1	3.85m x 3.61m
en-suite 1	2.38m x 1.48m
dressing room	2.03m x 1.90m
bedroom 2	3.86m x 3.58m
en-suite 2	2.56m x 2.18m
bedroom 3	4.29m x 2.64m
bedroom 4	3.86m x 2.92m
bathroom	2.64m x 2.26m

the lancaster
4 bed detached with double garage

www.anwyllhomes.co.uk

ANWYL
thoughtful homes

NEW HOMES QUALITY CODE

NEW HOMES OMBUDSMAN SERVICE

Anwyl Homes is a Registered Developer with the NHQB. This is a computer-generated image of the lancaster, elevation treatment may vary. Room sizes are approximate, dimensions are taken from the longest room point (please consult homes advisor for measurement points). Plots may be handed and any garages may be single or double. Kitchen and bathroom layouts are indicative. These plans are correct at the time of going to press, but may be subject to change during construction. Please ensure that you check for specific plot details. 01/11/22.

everything considered.